



GAT MONTHLY MEMBERSHIP PROGRESS REPORT

Results as of: 7/31/2022

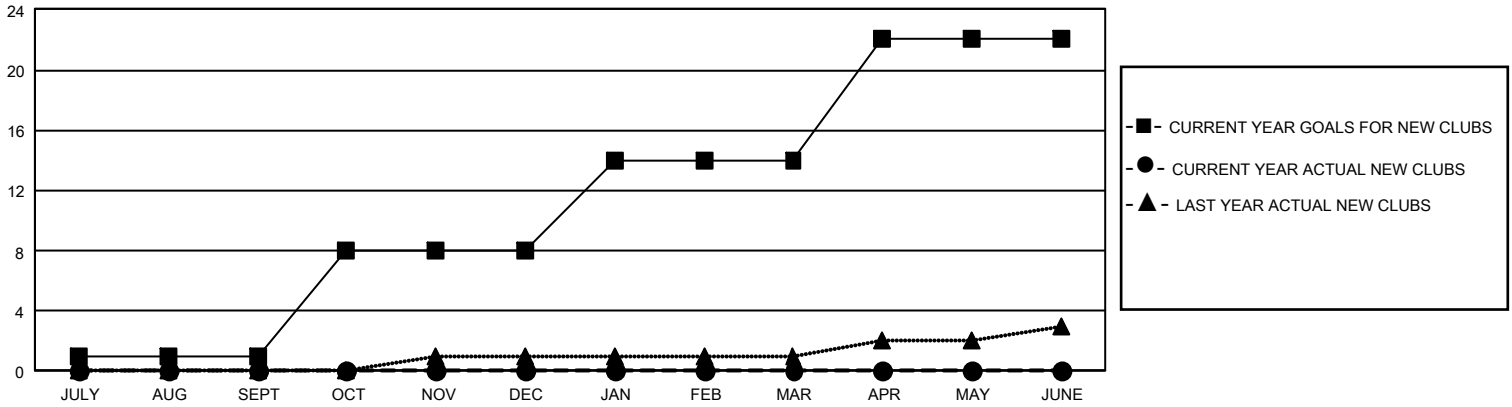
GMT Constitutional Area 1, Group C

REPORT DOES NOT INCLUDE CLUBS IN UNDISTRICTED AREAS.

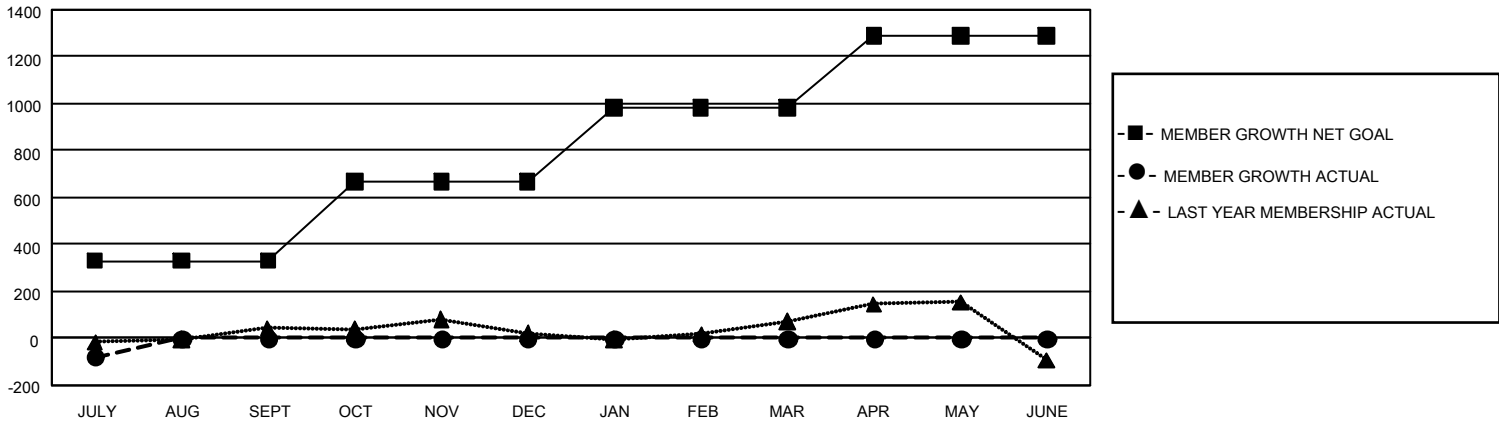
Clubs			
RESULTS FOR 2022-2023			
QUARTER	NEW CLUB GOAL	NEW CLUBS	DROPPED CLUBS
JULY/AUG/SEPT	3	0	3
OCT/NOV/DEC	21	0	0
JAN/FEB/MAR	18	0	0
APR/MAY/JUNE	24	0	0

Members			
RESULTS FOR 2022-2023			
QUARTER	MEMBER GROWTH NET GOAL	MEMBER GROWTH ACTUAL	DROPPED MEMBERS ACTUAL (including transfers)
JULY/AUG/SEPT	330	158	201
OCT/NOV/DEC	338	0	0
JAN/FEB/MAR	313	0	0
APR/MAY/JUNE	308	0	0

GOALS AND ACTUAL NEW CLUBS CUMULATIVE



GOALS AND ACTUAL MEMBERS CUMULATIVE



DROPPED CLUBS: 3	
DROPPED MEMBERS	
DECEASED	23
CLUB CANCELLED	17
OTHER	161
TOTAL	201

79 CLUBS OF 628 ADDED 1 OR MORE NEW MEMBERS

[CLICK HERE FOR CUMULATIVE MEMBERSHIP DATA](#)

<u>GENDER DISTRIBUTION</u>	
MALE	13,260 (68.22%)
FEMALE	6,169 (31.74%)
NON BINARY	0 (0.00%)
PREFER NOT TO ANSWER	7 (0.04%)
TOTAL FAMILY UNIT MEMBERS	3,886
FAMILY MEMBERS PAYING HALF DUES	1,968